



MAPLEWOOD SCHOOL

REFERENDUM PROJECT UPDATE

CONSTRUCTION UPDATE

What's Happening Now at Maplewood School?

- Wall base and sliding doors have been installed throughout the first-floor classroom area.
- Science classrooms are receiving countertops and sinks.
- Hardwood gym floor has been installed.

What's Coming Next at Maplewood School?

- Continuation of plumbing and plumbing fixture installation throughout the building.
- Finishing of reception office area.
- Gym floor staining and finishing.



Exterior composite wall panel is continuing to progress.



Aerial view of the expansive rooftop solar array.

Construction Keywords Glossary

Solar array: Large collection of individual solar panels.

Wall base: Trim that covers the bottom edges of an interior wall. Also known as baseboard molding or skirting.

Stair nosing: The overhanging material on the edge of a stair step.

Stair tread: The flat, horizontal surface off a staircase; the actual step used when ascending or descending a flight of stairs.



MAPLEWOOD SCHOOL

REFERENDUM PROJECT UPDATE

PROGRESS PHOTOS



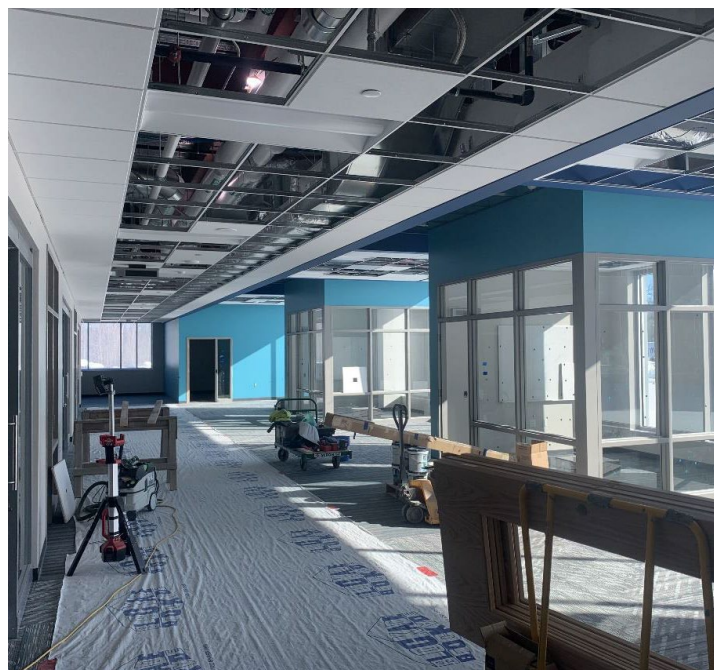
Gym floor has been laid down and staining and finishing are in progress.



First-floor classrooms have received their sliding door systems.



North stairway railings have been painted and stair nosing and treads have been installed.



Wall base has been installed and door installation is in progress in the first-floor collaboration area.